

YUKON & ALASKA

JOURNEYS
by Van Dyke 



Ocean Cruise

17 Days

\$11,790^{CAD}

All inclusive from, per guest, double occ.

June 9 to 25,
2021

Discover Yukon & Alaska

Explore the vast plains of the true north. Learn the ancient ways of the First Nations on a Yukon River cruise.

Catch a glimpse of a grizzly bear feeding on salmon in Eagle Creek. Fly over the spectacular Juneau Icefield with an Alaskan bush pilot to a family-owned wilderness lodge for lunch. It is thanks to years of visiting this extraordinary part of the world that we have curated a 17-day Journey filled with unique experiences and endless landscapes.





① Hubbard Glacier

Experience the most spectacular glacier viewing of your life as we cruise into Yakutat Bay and lay eyes on the awe-inspiring Hubbard Glacier jutting 90-metres into the sky as St. Elias looms majestically overhead. Climb into a floatplane and skid across the water before lifting off over breathtaking mountains, rivers, glaciers and lakes for a true Alaskan adventure!



② Denali National Park

Experience the thrill of spotting local wildlife up-close as we venture into the heart of the Denali National Park. On a tundra tour, a local guide takes us on a narrated Journey, where we keep our eyes and ears peeled for local wildlife like grizzly bears, wolves, foxes, eagles, caribou, and willow ptarmigan.

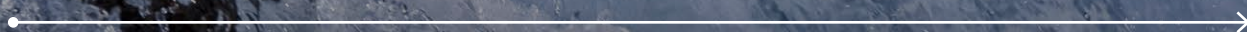


③ First Nations Boat Tour

Embark on a unique and authentic boat ride along the mighty Yukon River to Fort Reliance. Local resident Tommy Taylor shares his First Nation heritage and culture with us as we make our way along the scenic river.



Journey Itinerary



Day 1

DEPART FOR WHITEHORSE, YUKON

Start your Journey with us by enjoying a private car pick up service from your home. Upon arrival at the airport, guests departing from the Toronto airport are assisted with their check-in. Meet your Journey Manager and fellow guests, and board your flight to Yukon. Our Journey Manager travels with you to take care of all the details, allowing you to embrace your Journey. On arrival, we are met by our local guide and brought to our hotel where we settle in and relax. This evening, join us for a casual welcome dinner. (D)

Gold Rush Inn, Whitehorse (2 nights)





Day 2

WHITEHORSE & DOG SLED

Today, we explore Whitehorse, the capital of the Yukon. Our day begins with a drive through Whitehorse, along quaint downtown streets, past the world's tallest log cabin, along the shores of Schwatka Lake to discover scenic Miles Canyon. Experience the famous Alaska Highway as we head out into the wilds to visit with some good friends for a morning of sled dog chatter. We learn all about these furry friends who love the cold almost as much as they do pulling a sled through the rugged wilderness of the Yukon. Enjoy lunch in their remote wilderness home. (B,L,D)

Choose between two included excursions – (MacBride Museum or SS Klondike):

In the afternoon choose to either explore one of Canada's finest attractions, the MacBride Museum, or enjoy a tour of the SS Klondike, the largest sternwheeler in the North. Following which we meet back at our hotel for dinner.

Day 3

DAWSON CITY, PARIS OF THE NORTH

The Klondike Highway takes us past Lake Laberge where we travel 'down' (downriver) to Dawson City. We stop to visit our good friend Steve and taste the world's largest cinnamon buns. Continuing north, we pass through several First Nations communities before stopping for lunch in Carmacks and a view of Five Finger Rapids. A leisurely visit to Moose Creek Lodge we grab a taste of fresh pie and coffee. On arrival in Dawson City, you immediately notice not much has changed since the days of '98 with dirt streets, wooden sidewalks and brightly painted houses. (B,L,D)

Eldorado Hotel, Dawson City (3 nights)





Day 4

FIRST NATIONS BOAT EXPERIENCE

We wander out of town to a local gold mine to try our hand at gold panning. On our return, we stop at Dredge #4 for pictures and then take in the views from the Midnight Dome. This afternoon, our friend Tommy takes us on a boat tour along the mighty Yukon River. Tommy shares his winter home at the old Fort Reliance and then his very own 'Dog Island' for Eskimo donuts and tea. This evening after dinner, join your Journey Manager and fellow guests for the famous cancan Show at 'Diamond Tooth Gerties'. (B,D)

Day 5

TOMBSTONE TERRITORIAL PARK

For many years, our guests have told us that Dawson City is their favourite town on this Journey and they would enjoy more time here. We listened! This morning is yours to explore. This afternoon, we drive along the Dempster Highway and visit Tombstone Territorial Park Interpretive Centre to view stunning arctic tundra landscapes and wildlife. (B,D)





Day 6

TOP OF THE WORLD HIGHWAY TO TOK, ALASKA

Today is full of wonder as we cross the wide Yukon River by ferry and then begin climbing to the ridge of mountains that will take us into Alaska. Our Journey along the ridge of mountains over the Top of the World Highway with the impressive views of the Ogilvie Mountains will leave you breathless. A drive along the Top of the World Highway is not the same unless we stop and chat with our good friend Sue in Chicken, Alaska. Her style and cooking impress everyone who stops to say hello. We continue towards Tok, the Sled Dog capital of the world and arrive well before dinner to give you the chance to relax and enjoy this unusual town. (B,L,D)

Young's Motel, Tok (1 night)

Day 7

DENALI NATIONAL PARK

Today, we drive to Denali on the Alaska Highway, stopping along the way at Rika's Roadhouse, Santa Claus House in the North Pole and the Fairbanks Visitor Centre. We venture down the Parks Highway to Denali and enjoy dinner in a unique, family-owned dining room. Our hotel provides us with Alaskan-style accommodation at the edge of Denali. (B,L,D)

Denali Bluffs Hotel, Denali (2 nights)





Day 8

DENALI TUNDRA TOUR

This morning, we rise early to get into Denali National Park before the heat of the afternoon keeps the critters in hiding. Our ride takes us to the gates of the park where we board a school bus with a local guide who takes us on a narrated Journey into the heart of the park. Keep your eyes and ears peeled for local wildlife like grizzly bears, wolves, foxes, eagles, caribou and of course, willow ptarmigan. Enjoy lunch on the tour, and tonight, join the local drama group for the entertaining dinner show! (B,L,D)

Day 9

SCENIC RAILROAD TO ANCHORAGE

We board the Alaska Railroad for a scenic Journey to Anchorage. Take in the spectacular views from the dome car in our GoldStar coach. The charm and scenic appeal of this great and vast land are amplified through panoramic windows and underscored by historical narratives of lifelong Alaskan conductors and tour guides. We end the day with a brief tour of Anchorage. (B,L,D)

Alaska Railroad GoldStar Dome Car – Why do we prefer the Alaska Railroad cars?

Native Alaskans give a tour like only natives can. The observation area on the Alaska Railroad is on the top of the car, not in the middle, so your views are uninterrupted. Also, the Alaska Railroad Dome Car rides right behind the engine ensuring you have the best all-around views available on the entire train.





Day 10

ANCHORAGE TO SEWARD

A spectacular drive along Turnagain Arm brings us to the quiet town of Girdwood. A stop at Portage Glacier enables a visit to the Begich Boggs Visitor Centre and time for lunch. The drive to Seward provides wondrous views of the mountain ranges as we cross the Turnagain Pass and move steadily towards the sea to board our ship in Seward. All meals will be served onboard unless otherwise indicated. (B,L,D)

Celebrity Millennium (7 nights)

Day 11

DAY AT SEA: HUBBARD GLACIER

Today, we cruise past the massive Malaspina Glacier into Yakutat Bay and finally, Disenchantment Bay to view the spectacular Hubbard Glacier. Mount St. Elias, guardian of the Wrangell St. Elias National Park and Preserve, looms majestically overhead. This is one of the most dramatic glacier viewing opportunities you may ever have and affords us with an incredible, up-close view of a glacier 90 metres high and nine kilometres wide. (B,L,D)





Day 12

JUNEAU & GLACIER FLIGHTSEEING

Juneau, capital city of Alaska, is nestled between the Gastineau Channel and the green 'city wall' of Mount Juneau. This morning, we board our floatplane for a true Alaskan adventure and fly over mountains, rivers, glaciers, and lakes as we explore coastal Alaska from above on our included shore excursion. Free time this afternoon gives you a chance to explore at your leisure. (B,L,D)

Included Shore Excursion – Glacier Flightseeing and Taku Lodge via Floatplane

Climb into a seaplane and skid across the water before lifting off into the skies above Juneau. Every guest enjoys a window seat as you fly over five of Alaska's most spectacular glaciers. Soar above the wilderness where you might spot black bears and other wildlife. Your flight concludes with an exhilarating water landing at Taku Glacier Lodge, where we dine to majestic glacial views. Toast a truly exhilarating Alaskan excursion before enjoying the return flight back to the ship. Approximately 3 ½ hours.

Day 13

SKAGWAY & WHITE PASS RAILWAY

Skagway was the gateway to the goldfields in 1897 for the prospectors from all over the world. Board the famous White Pass & Yukon Route Railroad for our dramatic and exceptionally beautiful ride to the summit. We arrive in British Columbia and board our coach for a beautiful ride back to Skagway. Many waterfalls and dramatic mountain views await as we make our way to Skagway. Once we arrive, enjoy a tour of the town made famous by the prospectors of the late 1800s and by characters of fame like Soapy Smith and Frank Reid. (B,L,D)

Included Shore Excursion – White Pass Railway & Historic Town Highlights

Your Journey begins as you board an 1890s-style parlour car and retrace the original route up to the Yukon's White Pass Summit. This iron trail was built over 100 years ago through some of the North's most rugged terrain. Upon arriving in Fraser, British Columbia, board a motorcoach for a tour back to Skagway. See the historical areas of Brackett Wagon Road, Pitch Fork Falls, Dead Horse Gulch, and the infamous Tormented Valley. Once back in Skagway, you will have a guided tour of the town's historic downtown area filled with wooden boardwalks and false fronted buildings. Approximately 4 ½ hours.





Day 14

ICY STRAIT & WHALE WATCHING

Located on Chichagof Island, just outside the small village of Hoonah, this remote destination preserves and highlights the character and culture of local Alaskan Natives as well as the surrounding wilderness and wildlife. (B,L,D)

Included Shore Excursion – Marine Wildlife & Whale Watching Cruise

Board a sightseeing vessel and ply the cool, deep waters of Icy Strait to the Point Adolphus area, one of Alaska's premier whale-watching sights. Your onboard naturalist will describe the diversity of marine life that accumulates here every summer to indulge in the nutrient-rich waters, fuelled by the long Alaska summer days. Learn about the behaviour and habitat of the wildlife you may encounter which include humpback and orca (killer) whales, Stellar sea lions, harbour seals, bald eagles, and more. Approximately 2 ½ hours.

Day 15

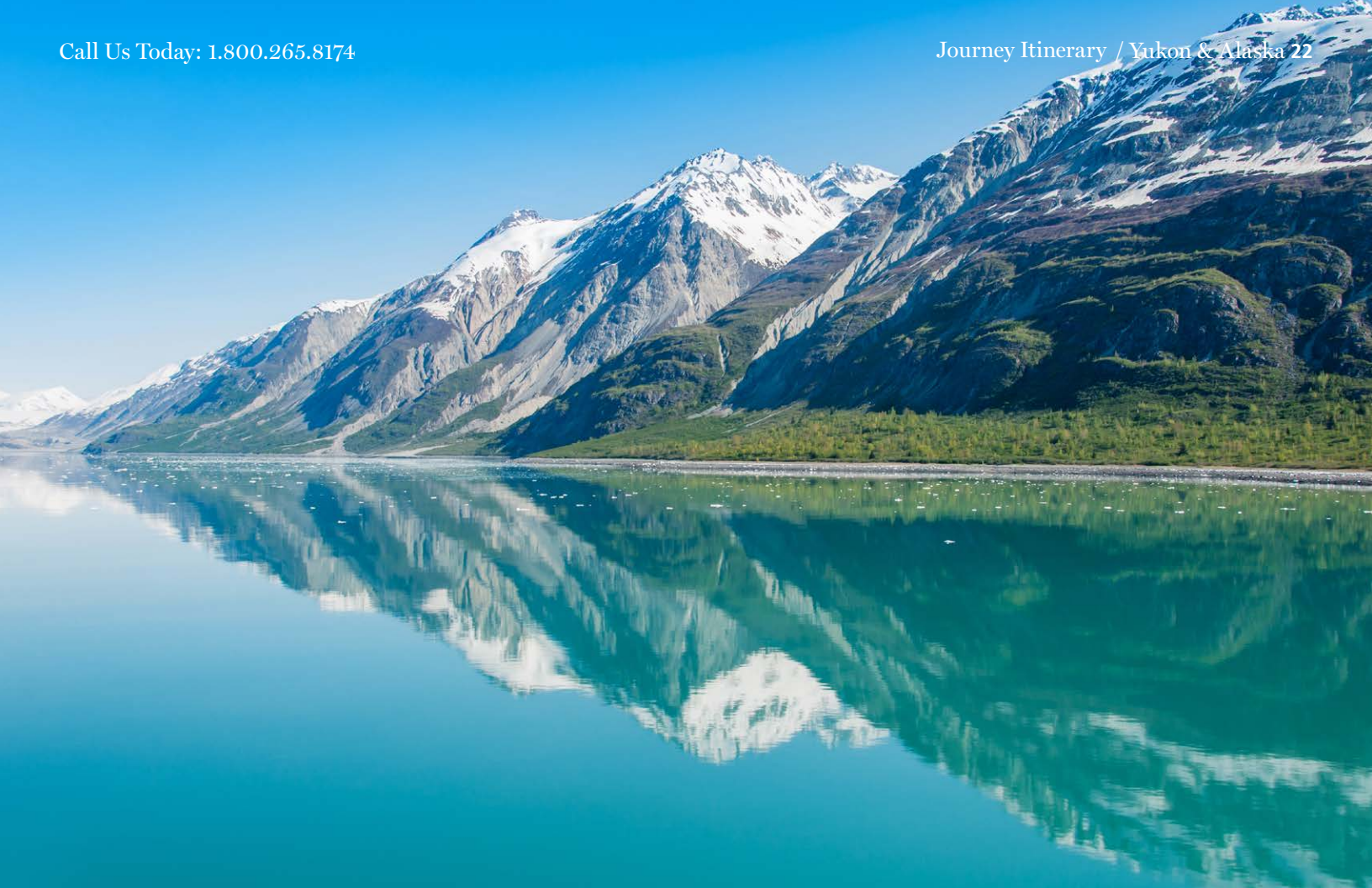
KETCHIKAN & TOTEM POLES

Surrounded by a snowy mountain range, cascading waterfalls, and full of rich wildlife, Ketchikan sits on the entrance to the famed Inside passage. Renowned for being Alaska's first city, Ketchikan has a beautiful display of Native American totem poles and a rich Alaska Native culture. (B,L,D)

Included Shore Excursion – Alaskan Wildlife Eco Tour

We set out to discover the incredible wildlife that lies within Herring Cove. An exclusive reserve in the forested mountains, Herring Cove is home to eagles, black bears, and seals who circle around the salmon-filled streams. Expertly guided along the bay, we follow Eagle Creek to a wooden boardwalk overlooking lush wetlands in the hopes of spotting deer, mink, marten and wolves. Approximately 3 hours.





Day 16

CRUISING THE INSIDE PASSAGE

Unwind and take in views of the Inside Passage, a quiet green channel bordered by forests, islands, inlets, and snow-capped peaks. (B,L,D)

Day 17

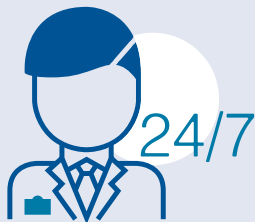
VANCOUVER & HOME

Rise early and enjoy the view as the ship passes under the Lion's Gate Bridge to enter the First Narrows into Vancouver. Enjoy a tour of one of the world's favourite cities as we explore Gastown, Stanley Park and Queen Elizabeth Park. We then bid farewell to our new friends and make our way to the airport for our flight home. Guests arriving at the Toronto airport are greeted and assisted to their private car home. (B)



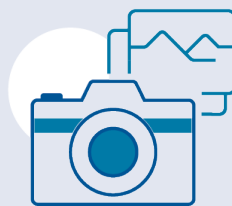
Signature Inclusions on this Journey

In addition to our essentials, your Journey includes our following Signature Inclusions:



24/7 Professional Journey Manager

- Will travel with you from Canada and handle every detail
- In addition to knowledgeable local guides



Memorable Private Excursions

- 5 Private excursions crafted by our team
- All sightseeing & entrance fees included



Private Car Pick-up Service

- Within a 200-kilometre radius, let your Journey begin in elegant comfort with a private chauffeured car to the airport



Generous Tips & Gratuities

- For the porters, local guides, hotel staff & many more, paid by us on your behalf

Our essentials included with your Journey:

- **7 nights** on the Celebrity Millennium
- **9 nights** in outstanding hotels
- **Most meals included**
(16 breakfasts, 13 lunches, 16 dinners)
- **Round-trip airfare** from Toronto with Air Canada
- **All taxes** as well as port & service charges
- **"Whisper" radios** included for use during excursions
- Flights from select Canadian gateways for only \$100
- Other gateways & travel classes available
- Portage for one piece of luggage per person
- Complete information & assistance leading up to your departure
- Branded overnight carry-on or backpack

With a one crew member for every two guests, high levels of service on the Celebrity Millennium is the rule, not the exception.

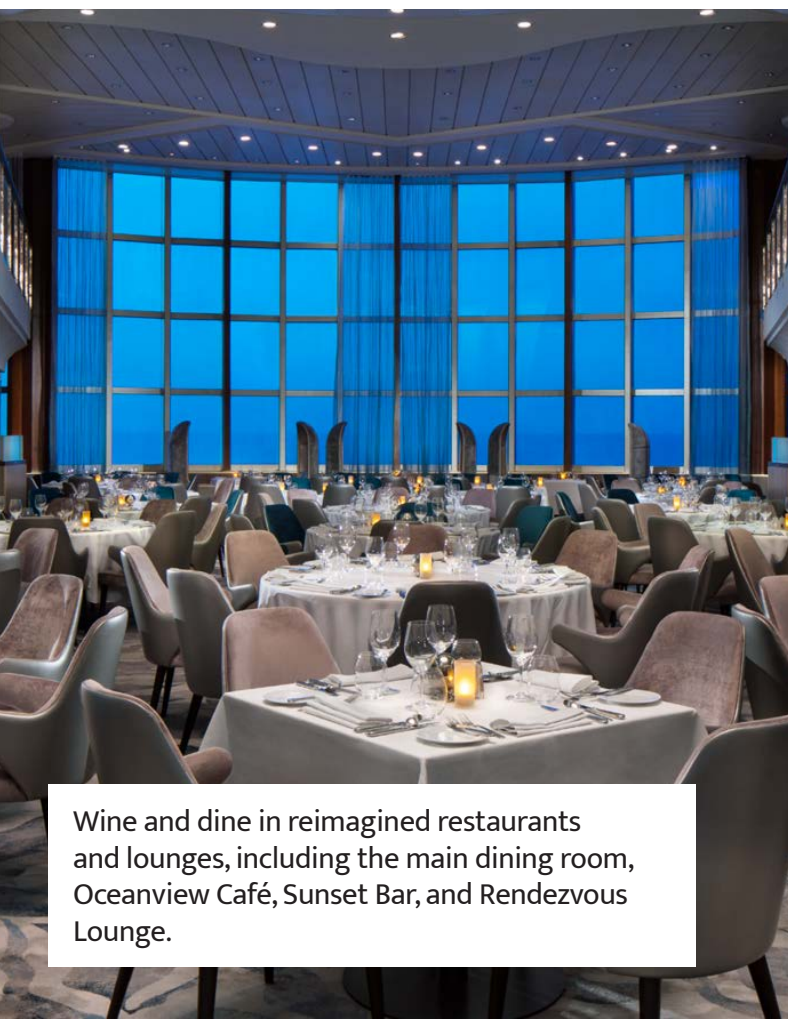
An aerial photograph of the Celebrity Millennium cruise ship docked at a wooden pier. The ship is white with a blue hull and features the Celebrity logo, a large white 'X' on a blue background. It is surrounded by a deep blue fjord with steep, forested mountains in the background. The foreground is filled with a dense green forest. The sky is blue with scattered white clouds.

Discover the
Celebrity Millennium





From adding brand new staterooms to elevating design concepts and technology across the ship, There is no better way to experience the exotic beauty of Alaska.

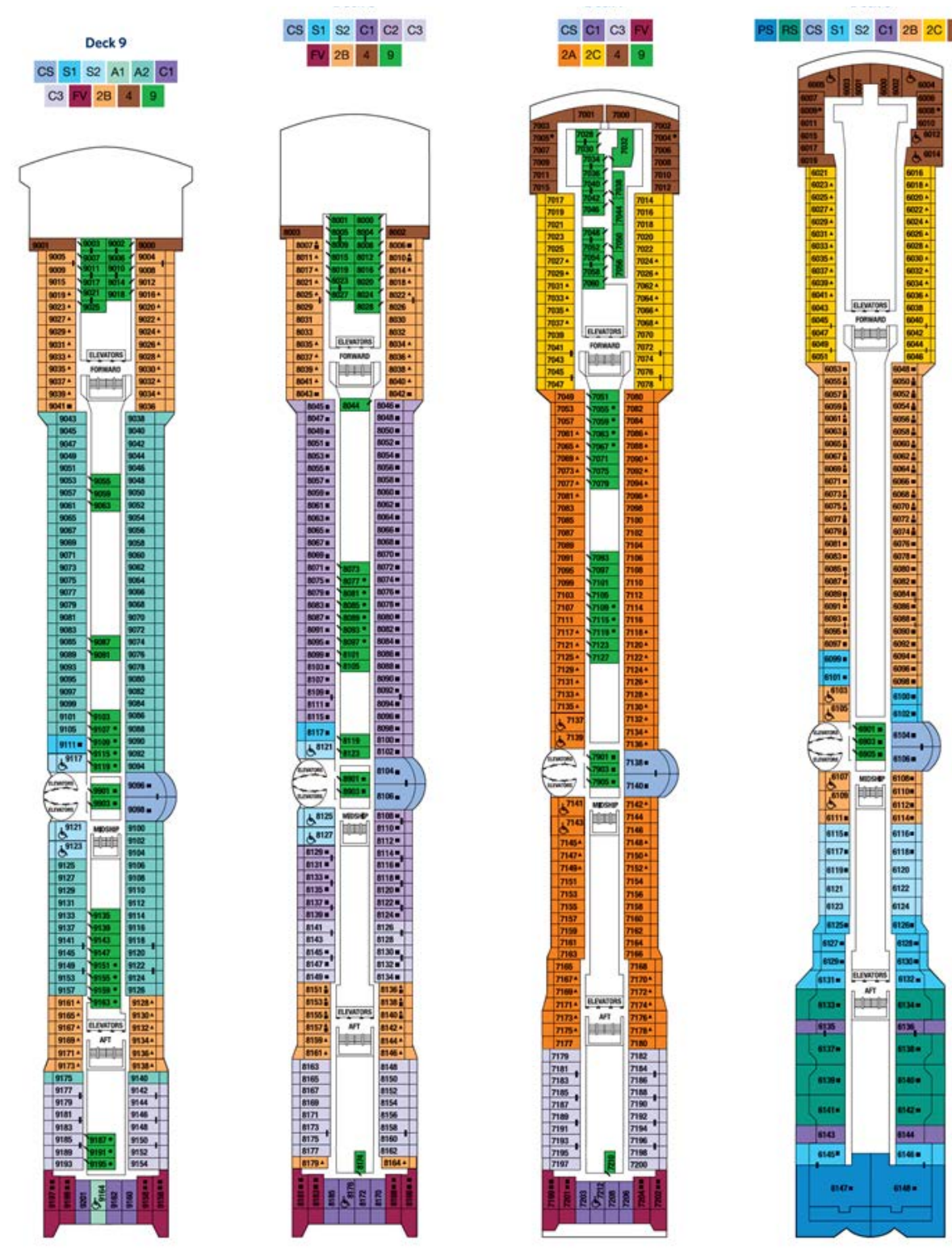


Wine and dine in reimagined restaurants and lounges, including the main dining room, Oceanview Café, Sunset Bar, and Rendezvous Lounge.



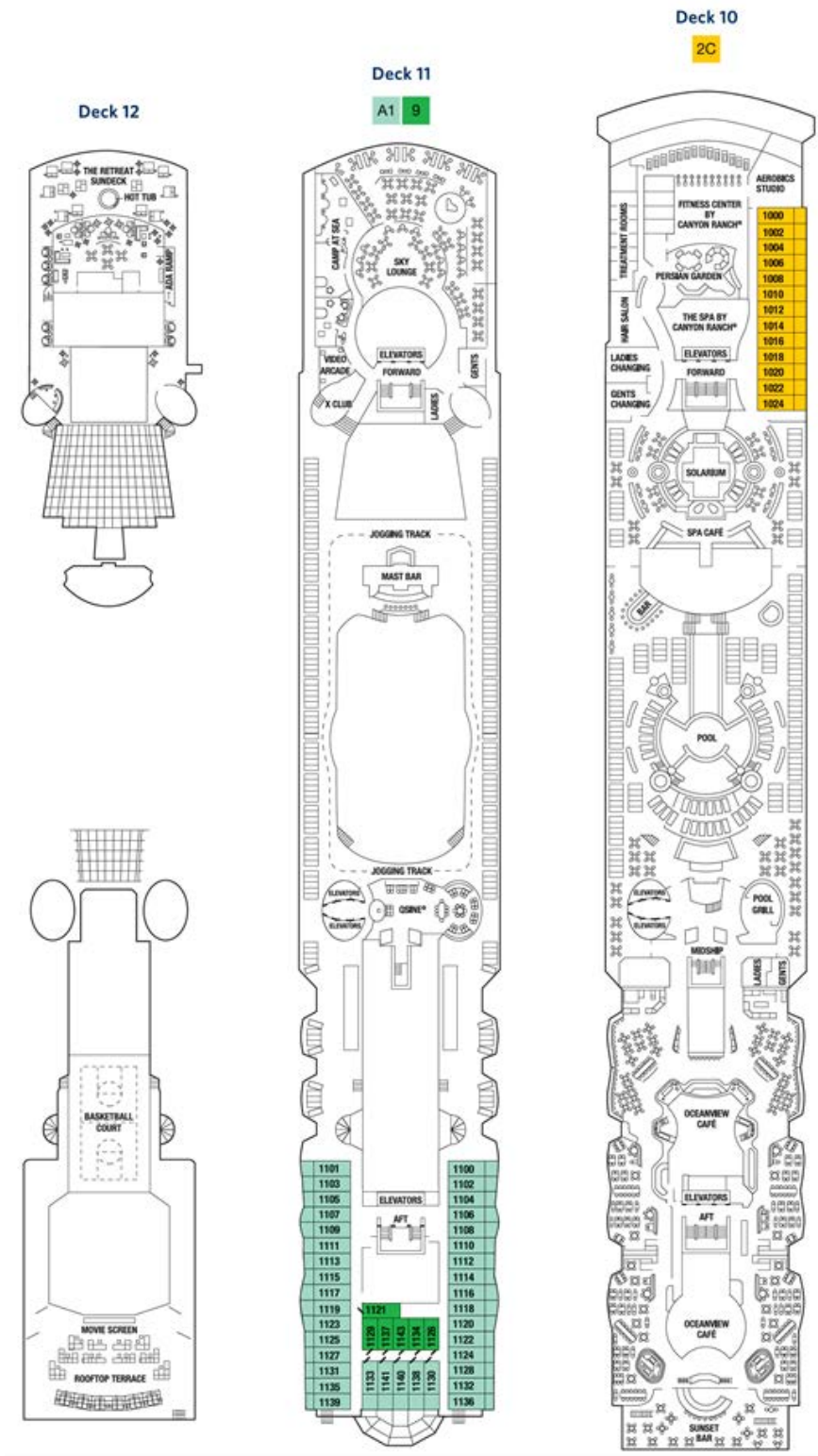
Amenities that rival the grandest hotel on land, surrender your senses and fall into deep relaxation in the newly redesigned spa or stroll through boutiques for some retail therapy.





Deck Plan

CELEBRITY MILLENNIUM DECK PLAN



Deck Plan

June 9 to 25, 2021

Fares & Staterooms



12 — Inside

170 sqft

These comfortable, inside staterooms are centrally located on this wonderful vessel.

- Two comfortable convertible beds
- Plush seating area
- Convenient desk area with mirror



06 — Ocean View

175 sqft

These comfortable staterooms are centrally located on this wonderful vessel and feature views of the waters along the coast of Alaska.

- Two comfortable convertible beds
- Plush seating area
- Convenient desk area with mirror

Double Occupancy

\$11,790

Single Occupancy

\$13,790

Double Occupancy

\$12,690

Single Occupancy

\$15,490

Prices are per guest in CAD, all taxes included.

June 9 to 25, 2021

Fares & Staterooms



2A — Veranda

194 sqft

These stunning staterooms feature floor-to-ceiling views of the waters along the coast of Alaska, rivalled only by the views from the stateroom's private veranda.

- Veranda with patio seating
- Two comfortable convertible beds
- Plush seating area
- Convenient desk area with mirror

Double Occupancy

\$14,190

Single Occupancy

\$18,390

C2 — Concierge

204 sqft

In addition to the features of the 2A — Veranda stateroom, the Concierge cabin includes the following amenities:

- Welcome champagne, daily fruit selection & fresh-cut flowers
- Daily hors d'oeuvres
- A pillow menu: Conformance, Body, Goose, and Isotonic
- Duvets and pillow-top mattresses
- Leather key holder, personalized stationery, a tote bag and umbrella
- Double-thick Frette bathrobes
- VIP invitations to ship events

Double Occupancy

\$14,690

Single Occupancy

\$18,990

Prices are per guest in CAD, all taxes included.